

ETN3000series

FAMILYrange

NAS/UNIFIED Storage
iSCSI&Fiber Channel Technology

Mid-range NAS UNIFIED Storage family offering high performance, scalability, high availability for vertical market and **backup or repository** applications



2U 12Bays Single Xeon Platform

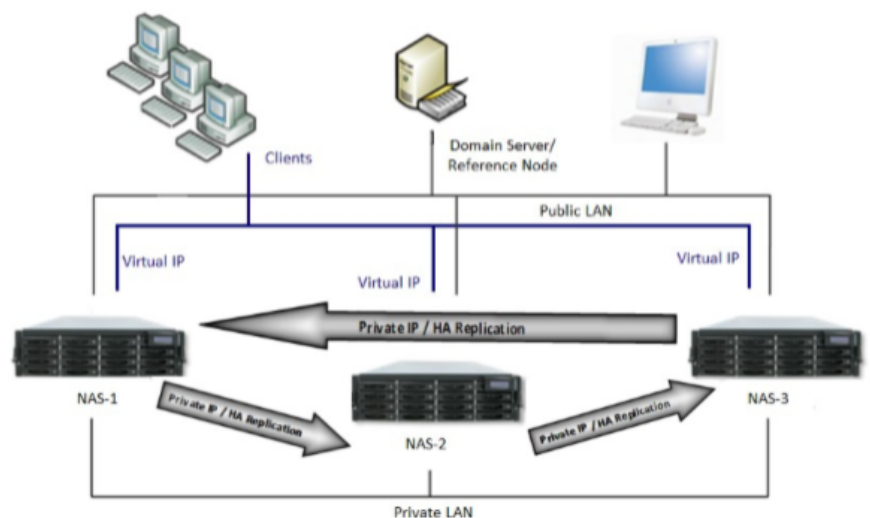


3U 16Bays Single or Dual Xeon Platform

KEY FEATURES

- ✓ Xeon or Dual Xeon Platform
- ✓ Unified Target iSCSI&FC
- ✓ Compression&Dedupe (ZFS Support)
- ✓ High Availability
- ✓ Snapshot & Volume Replication
- ✓ SSD Caching (on ZFS File System)
- ✓ Remote Replication
- ✓ Thin Provisioning
- ✓ VAAI & WORM Support
- ✓ Protocols supported
EXT3/EXT4/XFS/NTFS/V
MFS/ZFS

3-NODE HIGH-AVAILABILITY (HA) ARCHITECTURE





ETN3000series

FAMILYrange

NAS/UNIFIED Storage
iSCSI&Fiber Channel Technology

TECHNICAL SPECIFICATIONS

Model Name	ETN3212	ETN3316	ETN3316D
Form Factor	2U 12bays LFF		3U 16bays LFF
Processor	Single Intel Xeon E3-1220v6 4C 3.0GHz		Single or Dual Intel Xeon E5-2620v4 8C 2.1GHz
RAM	8GB DDR4 up to 64GB DDR4		16GB (32GB for 2CPU) DDR4 up to 256GB (512GB)
Controller RAID	ROC (Raid on Chip) Dual Core 1.2GHz with 1GB DDR3 NVRAM		
RAID Level	Support RAID Level 0,1,5,6,10,50,60		
Expansion Connctivity (ctrl)	Built-in 12Gb/s SAS wide ports (SFF-8644) for daisy chain expansion up to 128 SAS 12Gb/s drives using JBOD ETN3316J (max 7 ETN3316J)		
Drive Type	3.5" & 2.5" SAS, NL-SAS, SED HDD, 2.5" SAS SSD (also mixed) no bracket adapter 2.5" required to install 2.5" drives in 3.5" trays		
I/O	Integrated 4x1GbE RJ45 ports + dedicated LAN GbE RJ45 port for IPMI 4 slot PCIe available for HBA Addon iSCSI or FC (max 8ports 10Gbps or 16Gbps supported)		
General OS Limitations	Array Number: up to 64 - Volume Group Number: up to 64 - Logical Volume Number: up to 512 - Logical Volume Size: up to 32TB (eXT3), up to 1PB (others) - Logical Volume Size with ThinProvisioning: from 50GB to 32TB (up to 4x Logical Volume Size) - iSCSI Target Number: up to 64 - iSCSI Target Connections: up to 32 - iSCSI Volumes per Target: up to 256 - iSCSI Initiators ACL per Target: up to 32 - FC Target Number: up to 8 - FC Volume per Target: up to 256 - FC WWN ACL per Target: up to 32 - Share Number: up to 512 - ACL per Share: up to 64 - Account Number: up to 20K Group Number: up to 20K - Member par Group: up to 200 - Backup Plan Number: up to 128 - Snapshot par Volume: up to 8 - Snapshot Total Number: 256 - Node Number in Tree: up to 10K - Node Number in Listi: up to 10K - Upload Single File Size: up to 5GB		
Dimension (HxWxD)	88x482x620 mm	133x482x730 mm	130x438x515 mm
Protection Mode	Battery Backup on Raid Controller (optional)		
LCM	Integrated LCM		
Power Supply	80PLUS Platinum two Redundant 460W (1+1) AC Input 100-127V 10A, 47-63Hz 200-240V 5A, 47-63Hz		DC Output +12V 63.4A +5VSB 2.0A
Fan Module	6x hot pluggable/redundant internal fan		
Warranty	3yrs limited on system 1yr on Battery Backup		
Regulatory	CE, FCC, BSMI, VCCI, KCC		
Temperature	Operating Temperature: 0°C to 40°C Storage Temperature: -10°C to 50°C		
Relative Humidity	Operating Relative Humidity: 10% to 85% non-condensing Storage Relative Humidity: 10% to 90%		

The above specification are to be consider indicative
The specification should be modified without notification.