



enhance_{TECH}
WHERE STORAGE BEGINS

STORAGE SOLUTION
ENHANCE TECHNOLOGY

Scalable, flexible and reliable storage solutions.



OUR COMPANY

Enhance Technology is focused on designing highly **flexible** and **customized** Storage solutions, conceived in its own **Design Center** in Milan.

Enhance Technology offers solutions and not a pre-packaged, pre-configured product. A solution that responds perfectly to the needs of the customer and ensures a continuity of the relationship, for its flexibility and scalability, with an excellent cost-benefit ratio.

Part of the JMC Group, Enhance Technology is made up of a team of IT experts that invests all its know-how to build solutions that apply perfectly to your client's infrastructure project requirements.

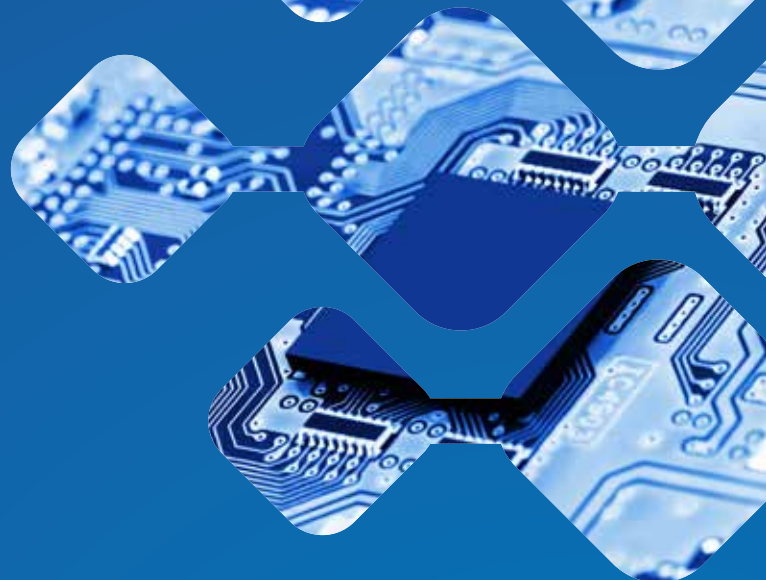




OUR MISSION

Enhance Technology solutions support our customers business grow and manage their **ever-evolving** storage and technology needs.

Our primary objective is to provide customers what they really need. That's why our company designs robust and effective storage systems solutions, first in class for quality - reliability - flexibility, easily adaptable to different environments and application sectors.



OUR SOLUTIONS

Our **ETS** and **ETN** family range are designed for specific areas of application, where the common storage cannot comply to them, with efficiency, flexibility and high performance.

With our storage solution you will be able to answer to specific needs, out of the simple data recovery. Once we know the customer needs we can sell you the right masterpiece to build up the most performant architecture.



PRODUCT

SAN & DAS ETS3000 LINE

Mid-range Storage Area Network (SAN) family offering high performance, reliability, flexibility for vertical market and demanding applications. Data-driven products focused on medium-sized businesses' needs -especially in the field of data and systems security.



2U 26bays
ETS3226D



2U 12bays
ETS3212D



4U 24bays
ETS3424D

FEATURES

- ◆ Dual Active/Active Ctrl
- ◆ Thin Provisioning
- ◆ Up to four Tieras
- ◆ SSD Caching
- ◆ Snapshot
- ◆ Dynamic Pooling
- ◆ Remote Replication
- ◆ N-way Mirroring
- ◆ VAAI & ALUA Support
- ◆ Cache2Flash Protection
- ◆ Three Years Warranty



SERVER ACCELERATION

Offloaded Data Transfers (ODX)
VStorage API for Integration (VAAI)



HARDWARE ACCELERATION

Hardware Offload Engine
Hardware RAID Engine



FLASH ACCELERATION

Automatic Storage Tiering
SSD Caching



TECHNICAL SPECIFICATIONS

SAN & DAS ETS3000 LINE



FEATURE	ETS3226D	ETS3212D	ETS3424D
Processor	Intel® D1500 quad core processor	Intel® D1500 quad core processor	Intel® D1500 quad core processor
Controllers	2 hot-swappable per chassis (active/active)	2 hot-swappable per chassis (active/active)	2 hot-swappable per chassis (active/active)
Operating system	Enhance Technology SAN OS	Enhance Technology SAN OS	Enhance Technology SAN OS
Max system memory	256GB per system	256GB per system	256GB per system
Internal storage capacity	26 x 2.5" drive bays	3.5" & 2.5" SAS, NL-SAS, SED HDD 2.5" SAS SSD	3.5" & 2.5" SAS, NL-SAS, SED HDD 2.5" SAS SSD
Max drive count	286	276	284
Max raw capacity	686 TB SAS per drive 2PB per array	3TB per array	

LINE SOLUTION

NAS UNIFIED LINE ETN3000

Mid-range Network Attached Storage (NAS) UNIFIED family offering high performance, scalability, high availability for vertical market and backup or repository applications, mainly used for content editing, post-production and video streaming.



2U 12Bays Single Xeon Platform

ETN3212



3U 16Bays Single or Dual Xeon Platform

ETN3316

ETN3316D

FEATURES

- ◆ Xeon or Dual Xeon Platform
- ◆ Unified Target iSCSI&FC
- ◆ Compression&Dedupe (ZFS Support)
- ◆ High Availability
- ◆ Snapshot & Volume Replication
- ◆ SSD Caching (on ZFS File System)
- ◆ Remote Replication
- ◆ Thin Provisioning
- ◆ VAAI & WORM Support
- ◆ Protocols supported EXT3/EXT4/XFS/NTFS/VMFS/ZFS



TECHNICAL SPECIFICATIONS

NAS UNIFIED LINE ETN3000



FEATURE	ETN3212	ETN3316	ETN3316D
Processor	Single Intel Xeon E3-1220v6 4C 3.0Ghz	Single Intel Xeon E3-1220v6 4C 3.0Ghz	Single or Dual Intel Xeon E5-2620v4 8C 2.1Ghz
Controllers	2 hot-swappable per chassis (active/active)	2 hot-swappable per chassis (active/active)	2 hot-swappable per chassis (active/active)
Operating system	Enhance Technology SAN OS	Enhance Technology SAN OS	Enhance Technology SAN OS
Max system memory	64GB per system	64GB per system	256GB per system
Internal storage capacity	3.5" & 2.5" SAS, NL-SAS, SED HDD 2.5" SAS SSD	3.5" & 2.5" SAS, NL-SAS, SED HDD 2.5" SAS SSD	3.5" & 2.5" SAS, NL-SAS, SED HDD 2.5" SAS SSD
Max drive count	286	276	284
Max raw capacity	686 TB SAS per drive 2PB per array	3TB per array	

SPECIFIC FIELDS OF APPLICATION



Data Center Consolidation

Our storage solutions are certified to work in virtualized environments, support network connectivity in iSCSI and FC with excellent performance capabilities allowing fast scalability at low cost.



Backup & Recovery

Our Storage solutions protect, maintain and secure data at all the time without interruption, optimizing backup and recovery procedures in complex IT environments, reducing data loss and ensuring business continuity.



SAP Hana

Our storage solutions are certified to work in SAP Hana environment where performance, especially regarding the number of operations per second (IOPS), is particularly required in addition to reliability and business continuity aspects.



Video Security

Our storage solutions, thanks to their ability of reliability and scalability, are particularly suitable for Surveillance Systems where the demand for storage capacity, availability and speed of access to recordings at any time is increasing.



Video Flow

Our storage solutions can support video streams in heterogeneous environments both in high resolution and in 4K thanks to the high level of performance they are able to achieve.





enhance^{TECH}
WHERE STORAGE BEGINS

ENHANCE TECHNOLOGY SRL

Via Leonardo da Vinci, 155 • 20062 Cassano d'Adda MI

T. +39 02.83591103 • info@enhance-tech.eu

www.enhance-tech.eu